

- The presence of RBC in urine is known as
 - Hematuria
 - Urolithiasis
 - Nephritis
 - Protonuria
- The disease as a result of prolonged clotting time is due to the lack of plasma thromboplastin component (PTC) necessary to the formation of thromboplastin, is
 - Christmas disease
 - Hypoprothrombinemia
 - Haemophilia
 - Stuart disease
- Haemophilia is
 - A type of mosquito lacking haemocoel
 - The royal disease
 - Faulty blood clotting
 - (b) and (c) both
- Which one of the following is a mismatched pair of the drug and its effect?
 - Barbiturates - Tranquillizer
 - Amphetamines - CNS stimulants
 - Lysergic acid - Psychedelic (hallucinogen) Diethylamide (LSD)
 - Heroin - Depressant, slows down body functions.
- Which drug is used as medicine to help patients cope with depression and insomnia?
 - Morphine
 - Amphetamines
 - Barbiturate
 - Both (b) and (c)
- Select the correct statement with respect to the given plants.



- Opium is dried latex obtained from the unripe capsular fruits of plant A.
 - The drug obtained from plant B is a powerful CNS stimulant, which increases a person's mental alertness and physical activity
 - Plant C belongs to family Moraceae; bhang, ganja, charas and marijuana are the hallucinogenic products obtained from this plant.
 - All of these.
- The tobacco products cause
 - Aneurysm
 - Polyarteritis nodosa
 - Thromboangiitis obliterans
 - Wernicke's syndrome
 - Caffeine can be obtained from
 - Thea sinensis
 - Coffea arabica
 - Theobroma cacao
 - All of these
 - Heroin is also known by the name
 - Coke
 - Crack
 - Smack
 - Hemp
 - Which of the following is a hallucinogen?
 - Bhang
 - Charas
 - Marijuana
 - All of these
 - A person is drug addict because of
 - Irritable behaviour, uncoordinated actions and emotional detachment
 - Habit of taking drug
 - Irresistible urge to take the drug and increase the dose
 - None of the above

12. Heroin is –
(a) Morphine (b) Diacetylmorphine
(c) Stimulant (d) Hallucinogen
13. Which of the following is observed No Tobacco Day?
(a) 1st May (b) 31st May (c) 1st August (d) 31st August
14. Alcohol addicts suffer from loss of memory.
The phenomenon is called
(a) Amnesia (b) Neuritis (c) Dementia (d) Insomnia
15. A 'drunk person' has earliest effect on which part of the brain?
(a) Cerebrum (b) Cerebellum
(c) Pons (d) Medulla oblongata
16. Which of the following is/are a carcinogen present in tobacco smoke?
(a) Hydrazine (b) Vinyl chloride
(c) Benzopyrene (d) All of these
17. Hangover is
(a) Increased desire to take alcohol
(b) Feeling of giddiness and nausea in the morning after having alcohol in the night
(c) Development of gastritis and peptic ulcers due to alcohol addiction
(d) Feeling of flushing after taking alcohol
18. Smoke causes -
(a) Diseases of lungs (b) bronchitis
(c) Asthma (d) All of these
19. Psychotropic drugs are –
(a) Psilocybin (b) LSD
(c) Cocaine, Hashish, Charas, Marijuana (d) All of these
20. Smoke of tobacco usually contains –
A. alcohol B. nicotine C. phenol D. tar
(a) A, B (b) A, B, C (c) B, C, D (d) A, B, C, D
21. Opium is obtained from which part of poppy plant
(a) Leaf (b) Flower (c) Root (d) Fruit
22. Which of the following is obtained from Papaver somniferum?
(a) Opium (b) Heroin (c) Methadone (d) All of these
23. Which of the following measures is not useful for prevention and control of alcohol and drugs among adolescents?
(a) Education & counseling (b) Medical help
(c) Peer pressure (d) Looking for danger sign
24. Given below are 4-statements. Read the statements and mark the option that has both correct statements
(I) Heroin, commonly called Smack, is obtained by acetylation of morphine
(II) Cocaine is obtained from the latex of Papaver somniferum
(III) Marijuana interferes with the transmission of dopamine
(IV) Morphine is an effective sedative and pain killer
(a) A and B (b) A and D (c) B and C (d) C and D
25. Tobacco chewing results in : -
(a) Mouth cancer
(b) Lung cancer
(c) Bone cancer
(d) Leukaemia

26. Opium is obtained from : -

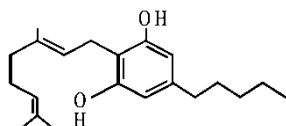
- (a) *Thea sinensis*
- (b) *Coffea arabica*
- (c) *Oryza sativa*
- (d) *Papaver somniferum*

27. LSD is obtained from : -

- (a) *Cannabis*
- (b) *Claviceps*
- (c) *Fusarium*
- (d) *Nostoc*

28. Cocaine is derived from : -

- (a) *Erythroxylon coca*
- (b) *Coffea arabica*
- (c) *Thea sinensis*
- (d) *Cannabis sativa*



29. Diagram is showing, skeletal structure of :

- (a) Morphine molecule
- (b) Cannabinoid molecule
- (c) Opioid molecule
- (d) Coca alkaloid

30. Which measure would be particularly useful for prevention and control of alcohol and drug abuse among adolescents?

- (a) Avoid undue peer pressure
 - (b) Seeking professional and medical help
 - (c) Looking for danger sign
 - (d) Education and counselling
 - (e) Seeking help from parents and peers
- (a) a, b, d
 - (b) a, c, d, e
 - (c) c, e
 - (d) a, b, c, d, e

1. A
2. A
3. D
4. (a)
5. (d)
6. (d)
7. (c)
8. (d)
9. (c)
10. (d)
11. (c)
12. (b)
13. (b)
14. (a)
15. (a)
16. (d)
17. (b)
18. (d)
19. (d)
20. (c)
21. (d)
22. (d)
23. (c)
24. (b)
25. (a)
26. (d)
27. (b)
28. (a)
29. (b)
30. (d)

